

## News from Around the College

### Department of Biological Science

Virginia Williams, an undergraduate in Dr. Esther Chen's research lab, and Ran (Diana) Cheng, an undergraduate in Dr. Sandra Banack's lab, were both named 2008 Howell-CSUPERB Research Scholars. The award from CSUPERB and the Doris A. Howell Foundation "fosters the development of young investigators and encourages them to enter the field of women's health care research as a career goal." (From the CSUPERB website)

Dr. Math P. Cuajungco was author on a papers that was recently accepted for publication:

- Grimm, C., Cuajungco, M.P., van Aken, A.F.J., Schnee, M., Jors, S., Kros, C.J., Ricci, A.J. and Heller, S. (2007) A helix-breaking mutation in TRPML3 leads to constitutive activity underlying deafness in the varitint-waddler mouse. *Proceedings of the National Academy of Sciences USA*, 104, 19583-19588.

Dr. Math P. Cuajungco also has the following new paper in press:

- D'Hoedt, D., Owsianik, G., Prenen, J., Cuajungco, M.P., Grimm, C., Heller, S., Voets, T., and Nilius, B. (2008). Stimulus-specific modulation of the cation channel TRPV4 by PACSIN3. *Journal of Biological Chemistry*.

Dr. Darren Sandquist and his co-authors were recently written up in Science Shots, an on-line outlet for weekly highlights in the sciences sponsored by AAAS and the prestigious journal Science.

<http://sciencenow.sciencemag.org/science-shots/index.dtl?page=112007>

The on-line paragraph refers to an article in *Oecologia* titled Past Climate Changes and Ecophysiological Responses Recorded in the Isotope Ratios of Saguaro Cactus Spines.

---

Dean's Office  
MH 166  
714 . 278 . 2638

---

**Dean**  
Dr. Steven Murray  
smurray@fullerton.edu

**Associate Dean**  
Dr. David Fromson  
dfromson@fullerton.edu

**Assistant Dean**  
MH 488  
Rochelle Woods  
rwoods@fullerton.edu

**Dept. of Biological Science**  
MH 282 / 714.278.3614  
Dr. Robert Koch, Chair  
rkoch@fullerton.edu

**Dept. Chemistry & Biochemistry**  
MH 580 / 714.278.3621  
Dr. Maria Linder, Chair  
mlinder@fullerton.edu

**Dept. of Geological Sciences**  
MH 254 / 714.278.3883  
Dr. David Bowman, Chair  
dbowman@fullerton.edu

**Dept. of Mathematics**  
MH 154 / 714.278.3631  
Dr. Paul Deland, Chair  
pdeland@fullerton.edu

**Dept. of Physics**  
MH 611 / 714.278.3366  
Dr. Murtadha Khakoo  
mkhakoo@fullerton.edu

**Program in Science Education**  
MH 527 / 714.278.2307

Undergraduate **Kimberly Nelson**, a SCERP student in **Dr. Paul Stapp's** lab, was awarded a Faculty-Student Research and Creative Activities Grant for her project "Effects of anthropogenic water inputs on Argentine ant invasion in riparian areas of southern Orange County". Kim also earned a Student-Parent Scholarship from Associated Students, CSUF.

Graduate student **Christopher Moore** received a Judith Presch Desert Research Scholarship to support his work on the ecology of fire and rodents in the Mojave Desert.

**Heather Franklin** is a new graduate student in the **Stapp lab**. She will work on some aspect of the ecology of plague in fleas and small mammals. Heather received her B.S. in Wildlife Biology from Colorado State University.

**Dr. Paul Stapp** was author or co-author on four papers that were recently accepted for publication:

- **Stapp, P.**, D.J. Salkeld, R.J. Eisen, R. Pappert, J. Young, L.G. Carter, K.L. Gage, D.W. Tripp & M.F. Antolin. Exposure of small rodents to plague during black-tailed prairie dog epizootics. *Journal of Wildlife Diseases*.
- Anderson, W.B., D.A. Wait, & **P. Stapp**. Resources from another place and time: Responses to pulses in a spatially subsidized system. *Ecology*.
- Salkeld, D.J., & **P. Stapp**. No evidence of deer mouse involvement in plague (*Yersinia pestis*) epizootics of prairie dogs. *Vector Borne and Zoonotic Diseases*.
- Salkeld, D.J., & **P. Stapp**. Prevalence and abundance of fleas in black-tailed prairie dog burrows: implications for the transmission of plague (*Yersinia pestis*). *Journal of Parasitology*.

**Dr. Marcello Tolmasky** was co-author of a paper that was recently published:

- M. P. Quiroga, P. Andrés, A. Petroni, A. J. C. Soler-Bistué, L. Guerriero, L. Jordá Vargas, A. Zorreguieta, M. Tokumoto, C. Quiroga, **M.E. Tolmasky**, M. Galas, and D. Centrón. Complex class 1 integrons with diverse variable regions including aac(6')-Ib-cr and a novel allele qnrB10 associated to ISCR1 in clinical enterobacteria from Argentina. *Antimicrobial Agents and Chemotherapy*, 2007 51 4466-447

[Department of Chemistry & Biochemistry](#)

**Dr. Peter de Lijser** gave a presentation entitled "*Mechanistic Studies on the Reactive Intermediates in the Photosensitized Reactions of Aldoximes*" at the 18th Winter Meeting of the Inter-American Photochemical Society in St. Petersburg, FL. Several members of the de Lijser research group also attended this conference; MARC scholar Anna Trinidad presented a poster entitled "*Structure-Reactivity Studies of Iminoxyl Radicals Generated via Nucleophilic Attack on Silyl Oxime Radical Cations*" and Jordan Hunter presented his poster on "*Ultra-fast b-Cleavage Reactions of N-alkoximinoyl Radicals Generated via Thermal and Photochemical Pathways*" with co-authors Jonathan Rosenberg and Cassandra Burke. Dr. de Lijser presented a poster entitled "*The Electron Transfer Beckmann Rearrangement*" with co-authors Kristen Rodriguez and Joanne Bertonazzi. Jordan Hunter received a travel award that covered his registration fee and \$200 towards his travel costs for this conference.

### Department of Geological Sciences

**Dr. Mathew Kirby** and his students/colleges presented two papers at the American Geophysical Union Fall Meeting in San Francisco.

- M E Kirby, B W Bird\*, I M Howat, S Tulaczyk. Geophysical Evidence for Holocene Lake-Level Change in Southern California (Dry Lake): Additional Evidence for a Regional Early Holocene High Stand. \*former MSc student at CSUF
- M A Blazevic\*, M E Kirby, B L Browne, A D Woods, D D Bowman. Paleoenvironmental Reconstruction of a Glacial-age Sediment Core. From Baldwin Lake, Southern California: Evidence for Multi-timescale Climate. \*MSc student author

**Dr. Phil Armstrong** recently received a three-year grant award of \$150,000 from the American Chemical Society Petroleum Research Fund to study uplift of the Chugach Mountains and Prince William Sound region of southern Alaska. This study area is smack in the middle of one of the major deformation regions of southern AK and is the site of one of the largest earthquakes in historic time - the magnitude 9.2 Good Friday earthquake in 1964.

Grad student **Jeff Reissman** co-authored a poster with **Dr. David Bowman** at the Fall Meeting of the American Geophysical Union in San Francisco on December 10-14. The poster was titled "Grid-Based and Fault-Based Search for Precursory Accelerated Moment Release (AMR): A Prototype Model for CSEP". Bowman was also co-author on another poster titled "Co-seismic and paleo-seismic slip along the Kokoxili Mw 7.8 earthquake rupture" by J. Van der Woerd (Institut de Physique du Globe - Strasbourg), Y. Klinger (IPG-Paris), X. Xu (China Earthquake Administration), K. LeDortz (IPG-Strasbourg), P. Tapponnier (IPG-Paris), G. King (IPG-Paris), D. Bowman (CSUF), W Ma (CEA), and W. Chen (CEA).

On January 24th, **Dr. Diane Clemens-Knott** was a guest panelist at the first Roundtable Discussion Seminar on Graduate Student Professionalism, hosted by USC for geology graduate students from USC, UCLA, CIT, CSUN, CSULA and CSUF. The seminar topic was "Walking the Minefield of Egos: Dealing with Personality Conflicts in Academia." The Roundtable Discussion Seminar series is aimed at bringing together graduate students in Earth Sciences from throughout Los Angeles to socialize and discuss topics related to graduate student professionalism and academia.

### Department of Mathematics

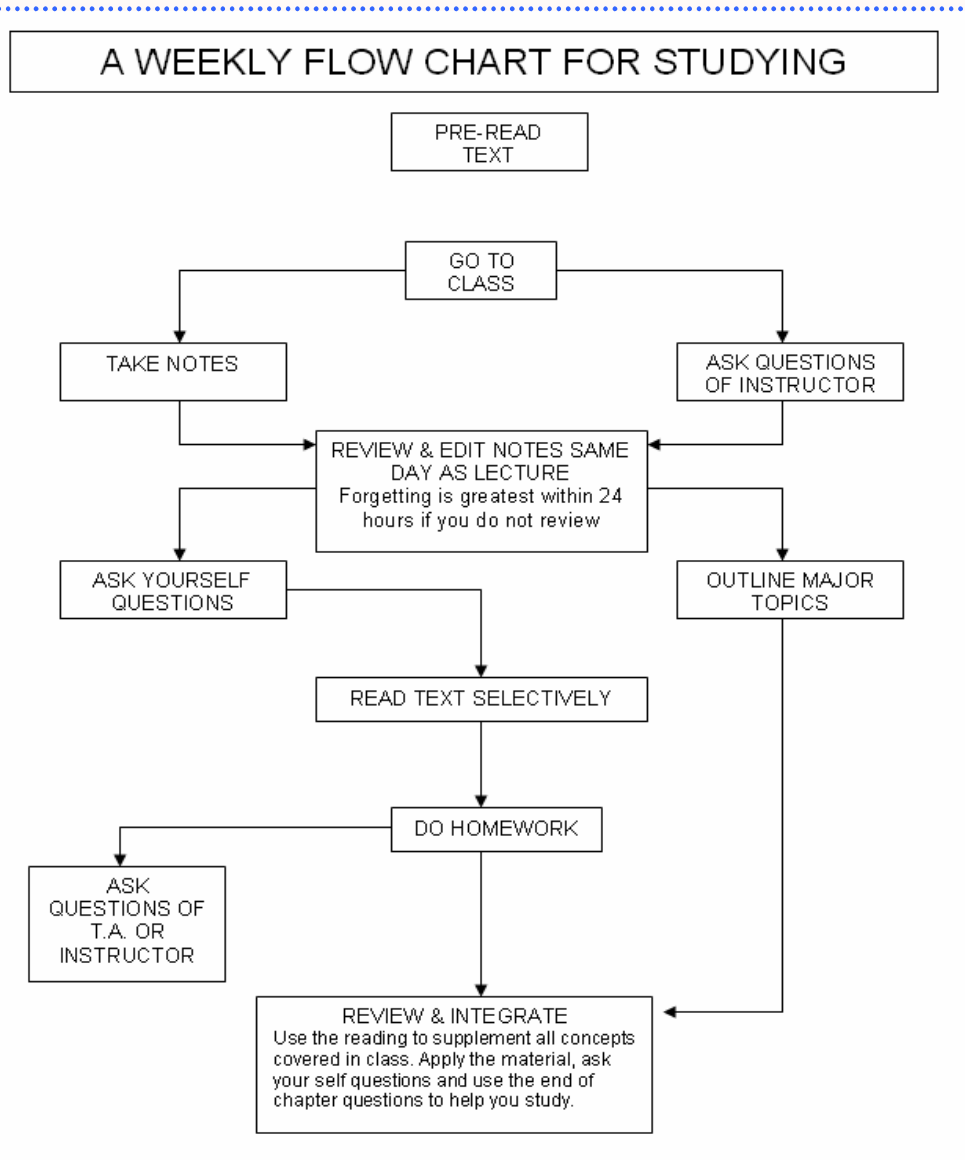
**Dr. Angel R. Pineda** has been invited to give a research talk titled "Analysis of Image Noise in 3D cone-beam CT: spatial and Fourier domain approaches under varying conditions of stationarity" at the SPIE Conference on Medical Imaging in San Diego on Thursday, February 21, 2008.

**Dr. Scott Annin** will speak at Chapman University in a review session for the American Invitational Mathematics Exam on Saturday, February 9. The exam is open by invitation only to exceptional high school students who excel in mathematics competitions. His talk will center on using roots on polynomials and complex numbers to solve challenging problems. Dr. Annin will also speak at the California Math Council for Community Colleges south section conference on February 29-March 1 in Orange, CA. His talk will address mathematical aspects of cryptography and internet security.

*In recognition of outstanding achievement in the College of Natural Sciences and Mathematics, the Dean's List Pad-folios will be in the Dean's Office February 19th - February 29th between the hours of 9:00am and 4:00pm, Monday thru Friday in McCarthy Hall, Room 166*

## STUDY 25-35 ... STUDY TIP

### The First Approach!



# ATTENTION NSM STUDENTS!

## EARN A FREE USB DRIVE!

Come study in the Opportunity Center for Science and Math Students (MH-488) 15 times and you'll receive a **FREE** USB Drive\*!

Pick up your punch card today!

### STUDENT HEALTH PROFESSIONS ASSOCIATION EVENTS

- |                     |                                                                                                                                                                                       |
|---------------------|---------------------------------------------------------------------------------------------------------------------------------------------------------------------------------------|
| February 8, 2008    | Dr. Sami, Division Chief for PSF Ophthalmology 1-2pm in TSU Alvarado AB                                                                                                               |
| February 15, 2008   | Dr. Jack Myers, a pharmacist in CVS 1-2 pm in TSU Alvarado AB                                                                                                                         |
| February 20, 2008   | Western University of Osteopathic Medicine will host an Osteopathic Awareness Conference, from 5-9pm at Western University in Pomona, Cost: \$15<br>Registration by February 13, 2008 |
| February 22, 2008   | Mr. Brain Zeglen from the UCSD School of Medicine 1-2pm in TSU Alvarado AB                                                                                                            |
| Feb 27-Feb 28, 2008 | SHPA American Red Cross Blood Drive, in TSU Paviillion C from 9am-3pm.<br>For volunteering: Sign up during Friday Meetings/ Email: Sandy71402@aol.com                                 |
| February 28,2008    | Bill Fazzalaro PA-C, Physician's Assistant 1-2pm in TSU Alvarado AB                                                                                                                   |

## CONGRATULATION TO THE CSUF STUDENTS AND FACULTY WHO PRESENTED AT CSUPERB 2008

*Underlining denotes presenting authors, \* denotes undergraduate student authors, # denotes graduate students*

### **Glen M. Nagel Undergraduate Student Research Award Nominees:**

**Characterization of the Recombinant ADP-Glucose Pyrophosphorylase from *Thermus thermophilus* HB27**

J. Gonzalez\*, C. R. Meyer and G. Watanabe

*Department of Chemistry and Biochemistry, CSUF*

*\*\*\*\*Jason Gonzalez won the Glen Nagel Undergraduate Research Award\*\*\*\**

**Only an Unusual Gene Cassette including Two Antibiotic Resistance Genes is Mobile in Tn1331**

T. R. Parenteau\* and M. E. Tolmasky

*Department of Biological Sciences, CSUF*

**Neural Stem Cell Culture Conditions Change the Phenotype of Human Mesenchymal Stem Cell as Determined by Marker-Specific Monoclonal Antibodies**

A. T. Yunghans<sup>12\*</sup>, R. A. Koch<sup>1</sup> and P. H. Schwartz<sup>12</sup>

<sup>1</sup>*Department of Biological Sciences, CSUF*

<sup>2</sup>*National Human Neural Stem Cell Resource, CHOC Research Institute, Orange, CA*

### **Howell-CSUPERB Research Scholar Award Nominees:**

**The Effect of SOD-1 Deficiency and Manganese Supplementation on Oxidative Stress Resistance in *Caenorhabditis elegans***

S. A. Sprowl<sup>1\*</sup>, R. D. Kaplan<sup>1\*</sup>, C. Srinivasan<sup>1</sup>, Y. Zou<sup>2</sup> and T. Huang<sup>2</sup>

<sup>1</sup>*Department of Chemistry and Biochemistry, CSUF*

<sup>2</sup>*Neurology and Neurological Sciences, Stanford University*

### **Don Eden Graduate Research Award Nominees:**

**The Smc004 and Smb214 Putative Target Genes of the ExoS-ChvI Two-Component System in *Sinorhizobium meliloti***

V. M. Williams\*, J. M. Vinson\* and E. J. Chen

*Department of Biological Sciences, CSUF*

### **Friday Evening Poster Session:**

**Cofactor and Inhibitor Bound Crystal Structures of Chicken Muscle Lactate *Dehydrogenase***

L. S. Grant<sup>#</sup>, H. Kalantari\*, C. Srinivasan, C.R. Meyer and K. A. Kantardjieff

*Department of Chemistry and Biochemistry, CSUF*

**Development of Selective Butyrylcholinesterase Inhibitors**

S. P. Chen\*, T. A. Chen\*, C. T. Liu\* and S. S. Sharieff\*

*Department of Chemistry and Biochemistry, CSUF*

**Probing the Role of the glgC1 and glgC2 Recombinant ADP-Glucose Pyrophosphorylases from *Thermotoga maritima***

T. Harake<sup>#</sup>, Y. Lee\*, D. Nguyen\*, M. Matsui and C. R. Meyer

*Department of Chemistry and Biochemistry, CSUF*

**Convergence of the G Protein- and Integrin-Dependent Pathways in Ascidian Sperm Activation**

J. A. Corleto\*, and R. A. Koch

*Department of Biological Sciences, CSUF*

**Uncovering Factors that Alter “Free” Iron Levels in *Caenorhabditis elegans* as Measured by Electron Paramagnetic Resonance (EPR) Spectroscopy**

L. Lin<sup>#</sup>, A. Bach\* and C. Srinivasan

*Department of Chemistry and Biochemistry, CSUF*

**Manipulation of apoE Gene Expression through siRNA Mediated Gene Silencing**

M. C. Huckaby\*, K. E. Linke\* and N.V. Patel

*Department of Biological Sciences, CSUF*

**Impact of Lipopolysaccharide (LPS) on Directed Differentiation of Mouse Embryonic Stem Cells into Neurons**

N. R. Gookin\*, J. J. Limon\*, A. D. Nguyen\* and N.V. Patel

*Department of Biological Sciences, CSUF*

**Effects of Lactational Hormones on Expression of Copper Transporters and Milk Proteins, and on Rates of Copper Uptake, in the PMC42 Model of Breast Epithelial Cells**

S. H. Kim<sup>#</sup> and M. Linder

*Department of Chemistry and Biochemistry, CSUF*

**Does Over-expression of the Copper Pump, ATP7A, Increase Incorporation of Copper into Plasma Ceruloplasmin During its Synthesis in Liver?**

Y. Chu<sup>#</sup>, T. Ho\* and M. C. Linder

*Department of Chemistry and Biochemistry, CSUF*

**Determining if Both the Open and Closed Forms of Alpha 2 Macroglobulin Bind the Same Amounts of Copper and Deliver it to Hepatic Cells at the Same Rate**

D. Ramos\*, M. Moriya, M. C. Linder

*Department of Chemistry and Biochemistry, CSUF*

**Expression of Red Light-induced Genes in *Chlamydomonas reinhardtii*: Association of a Potential Phytochrome-like Protein**

**M. Olave<sup>#</sup>, D. Alizadeh<sup>#</sup> and A. Cohen**

*Department of Biological Sciences, CSUF*

**Enabling Biocomputational Applications to Provide and Consume Services within CSU's Grand Grid**

**Y. Postrekhin<sup>1</sup>, S. Courellis<sup>1</sup>, K. A. Kantardjieff<sup>2</sup>, R. Chun, K. Cousins, P. Fleming<sup>3</sup>, N. Kioussis, B. Lustig<sup>3</sup>, D. Petkovic<sup>4</sup>, S. Sharma<sup>5</sup>, W. Thibault<sup>6</sup>, and F. Valafar<sup>7</sup>**

<sup>1</sup>*Department of Computer Sciences, CSUF*

<sup>2</sup>*Department of Chemistry, CSUF*

<sup>3</sup>*Department of Chemistry, San Jose State University*

<sup>4</sup>*Department of Computer Science, San Francisco State University*

<sup>5</sup>*Department of Chemistry, California State Polytechnic University, Pomona*

<sup>6</sup>*Department of Computer Science, California State University, East Bay*

<sup>7</sup>*Department of Computer Science, San Diego State University*

**Extracting Protein Structural Features for Sequence-Homology Calculations**

**K. Pham<sup>1#</sup>, S. Do<sup>2#</sup>, H. Lakkaraju<sup>3#</sup>, B Lustig<sup>2</sup> and K. A. Kantardjieff<sup>1</sup>**

<sup>1</sup>*Department of Chemistry and Biochemistry/W.M. Keck Fndn. Cntr. Molec. Struct., CSUF*

<sup>2</sup>*Department of Chemistry, San Jose State University*

<sup>3</sup>*Department of Engineering, San Jose State University*

**A Study on the Efficacy of Homology Modeling in Docking Simulations**

**C. M. Patuwo<sup>11\*</sup>, B. M. Lee<sup>21\*</sup> and K. A. Kantardjieff<sup>23</sup>**

<sup>1</sup>*Troy High School*

<sup>2</sup>*Department of Chemistry and Biochemistry, CSUF*

<sup>3</sup>*W.M. Keck Center for Molecular Structure, CSUF*

**Identification and Characterization of Regulatory and Catalytic sites of glgC-2 from *Thermotoga maritima***

**S. Lim<sup>#</sup>, V. Nguyen<sup>\*</sup>, R. Lippert<sup>\*</sup>, A. Acero<sup>\*</sup>, M. Matsui and C. R. Meyer**

*Department of Chemistry and Biochemistry, CSUF*

**Phenotypical Studies of Lead Toxicity in the Nematode *Caenorhabditis elegans***

**R. A. Suresh<sup>#</sup>, E. Suarez<sup>#</sup>, A. Villareal<sup>\*</sup>, H. Godwin, M. Lee<sup>\*</sup>, D. Huerta and C. Srinivasan**

*Department of Chemistry and Biochemistry, CSUF*

**Searching for Microdomains (Lipid Rafts) in *Ascidia ceratodes* Sperm Cells**

**R. Ruiz<sup>\*</sup>, D. Diaz<sup>#</sup> and R. Koch**

*Department of Biological Sciences, CSUF*

**Identification of Molecular Mechanisms Regulating apoE Gene Expression**

J. T. Schott\*, N. Izadi<sup>#</sup>, R. A. Rolnik, H. A. Cochran\*, S. M. Harpst\* and N. V. Patel

*Department of Biological Sciences, CSUF*

**Determining the Effects of Various LXR Ligands on ApoE Gene Expression**

S. C. Peterson\*, P. S. Caseley\*, M. C. Huckaby\*, K. E. Linke\*, T. M. Trinh\*, T. M. Jenny\*, J. D. Yun\* and N. V. Patel

*Department of Biological Sciences, CSUF*

**Characterization of a Low Molecular Weight Iron Component that may be a part of the Labile Iron Pool**

B. R. Rojas<sup>#</sup>, L. Planutyte\* and M. C. Linder

*Department of Biochemistry, CSUF*

**Potential Abnormalities in Iron Metabolism in Hyperlipidemia Patient Fibroblasts**

C. D. Morrison<sup>#</sup>, E. Sauble<sup>#</sup> and M. C. Linder

*Department of Biochemistry, CSUF*

**The Amounts of Intracellular Iron Associated with Ferritin and a Potential Intracellular Iron Shuttle under Different Iron Conditions using Rat Hepatoma Cells**

L. Ton-nu\* and M. C. Linder

*Department of Chemistry and Biochemistry, CSUF*

**Lactational Hormones Enhance Expression of Casein but not Ceruloplasmin or CTR-1 in Mouse Mammary Explants**

C. I. Kassissa\*, M. C. Linder and T. Z. Kidane

*Department of Chemistry and Biochemistry, CSUF*

**Expression of Three Single Chain Antibodies Against Botulinum Neurotoxin-A in the Unicellular alga Chlamydomonas Reinhardtii**

J. M. Kuhnlein\* and A. Cohen

*Department of Biological Sciences, CSUF*

**Indirect and Direct Transcriptional Regulation by the ExoS-ChvI Signaling Pathway in *Sinorhizobium meliloti***

E. A. Sabio<sup>#</sup>, M. Benam\* and E. J. Chen

*Department of Biological Sciences, CSUF*

## CSU STUDENT RESEARCH COMPETITION SPRING 2008

### **WHAT?**

A competition of student research papers and presentations from across the 23 CSU-system campuses. Local presentations to a jury of Associate Deans from the eight Cal State Fullerton colleges to be held in late February. Undergraduate and graduate student finalists then will represent CSUF at the state-level presentations to be held at CSU East Bay (Hayward) on May 2<sup>nd</sup> and 3<sup>rd</sup>, 2008.

### **WHO IS ELIGIBLE?**

- Currently enrolled undergraduate and graduate students
- Alumni / alumnae who completed their CSUF degrees in either May or August 2007 or January 2008.

Cal State Fullerton is permitted to send a maximum of ten student representatives.

### **AWARDS:**

A. Local CSUF Awards: \$300 will be awarded to each project selected to make a presentation at the system-wide competition. This may be in the form of institutional payment toward the person's travel expenses (such as the university purchasing a plane ticket and/or paying for hotel expenses). If the project is submitted as a team effort, then the entire team will share in a single award. If you are selected, you will sign an invoice to receive the award.

B. CSU-Level Awards: Larger cash awards on the order of \$500 - \$1000 are given for winners and runners-up in each category at the CSU East Bay event. The amounts vary, depending upon sponsorship and the category.

### **APPLICATION PROCEDURE:**

**Interested students must submit their Research Summary electronically to Ms. Emma Hernandez in the Office of Academic Programs (McCarthy Hall 111) no later than Friday, February 8, 2008.** Each person (or team) who submits the necessary documents by the above deadline will be included in the On-Campus CSUF Competition. The on-campus presentations will be held between February 22 and 29.

### **QUESTIONS:**

Student questions should be directed to Ms. Emma Hernandez in the Office of Academic Programs, McCarthy Hall suite 111 or by calling her at (714) 278-3602. Her e-mail address is [emhernandez@fullerton.edu](mailto:emhernandez@fullerton.edu).

## SUMMER INTERNSHIP: WASHINGTON, D.C.



Interning in Washington is a great way to prepare for a career for students from a variety of backgrounds. Students majoring in programs as diverse as Communications, Business, Philosophy, and Political Science have enjoyed working in D.C. through the summer program in a variety of offices.

“The program has been very important for my academic and professional development,” says Jeff Gonzalez, who interned with the Senate Budget Committee in both 2006 and 2007. He adds, “I have made key contacts in D.C. and hopefully they will lead to future employment. Washington is a beautiful and exciting city that offers important experiences that can’t be duplicated on the west coast.”

The Cal State D.C. program is now in its third year of offering students opportunities to spend a summer studying abroad and working in the world of politics in our nation’s capital. Through the program, students enroll in two separate three unit classes while interning in Washington. Internships range from congressional offices, executive agencies, political parties, advocacy groups, non-profits, and a variety of other offices in and around the area. Juniors, seniors, and graduate students from all majors are encouraged to apply.

Information sessions in **UH 521** will be offered on:

**February 5 (Tuesday): 12p.m. - 1p.m. & 5p.m. - 6p.m. February 6 (Wednesday): 4p.m. - 5p.m.**

For more information, contact **DR. STEPHEN J. STAMBOUGH** at [sstam-bough@fullerton.edu](mailto:sstam-bough@fullerton.edu) or visit the website for more information and application materials:

<http://hss.fullerton.edu/polisci/wip/index.asp>

Applications are accepted on a rolling basis. If students wish to seek financial assistance through the program, they must apply and indicate an interest in financial assistance by February 15. The program includes assistance in securing an internship, an academic component for students to earn academic credit, housing assistance, and the possibility of scholarships.



# SPRING 2008 GROUPS AT CAPS



## Entre Mujeres - Thursdays 4:30 to 6:00

The purpose of this group is to establish a supportive network where female students can discuss Latino cultural issues relevant to their educational successes or challenges. Topics will include school, family relationships, identity, dating, work, social demands, and impact of these issues on their CSUF experience. Please contact Amalia Guerrero, Psy.D. at 714-278-3040 or at [amguerrero@fullerton.edu](mailto:amguerrero@fullerton.edu) to schedule a screening appointment.

## Graduate Student Support Group - T.B.D based on available of members

The graduate experience presents a unique set of challenges/stressors to students coupled for many people with less sources of emotional support to deal with them. This group will provide a safe space for graduate students to explore and get support around these common areas including but not limited to academic, future related, interpersonal, family, socio-developmental, and emotional concerns. Please contact Scott Cypers, Ph.D. at 714-278-3040 or e-mail [scypers@fullerton.edu](mailto:scypers@fullerton.edu) to schedule a screening appointment.

## Raising Self Esteem to Initiate Change - Tuesdays 4:00 to 5:30pm

Women - discover how your self esteem developed and what impact it has on your life now. Realize that you have everything you need to become the person you want to be. Join us for an interactive group to examine how our thoughts influence our behavior. Learn how to ask for what you want and deserve. Please contact Cassandra Stringer, MFT at 714-278-3040 or e-mail at [cstringer@fullerton.edu](mailto:cstringer@fullerton.edu) to schedule a screening appointment.

## Relationships Group - T.B.D. based on availability of members

This group is designed for people who want to explore their significant relationships and interpersonal patterns with people. The group will help you to take a look at yourself around relational issues of trust, intimacy, anger, assertiveness, risk-taking, and power dynamics to help you to forge or make more satisfying relationships with people in your life. The group is open to both males and females. Please contact Scott Cypers, Ph.D. at 714-278-3040 or e-mail [scypers@fullerton.edu](mailto:scypers@fullerton.edu) to schedule a screening appointment.

## Social Confidence Group - Monday 4:30 to 6:00pm

This six-session workshop is ideal for students who are tired of feeling like their anxiety is getting in the way of them being the person they want to be. The group will provide a safe place to learn about the nature of anxiety/confidence and learn new skills to work through these issues. Please contact Scott Cypers, Ph.D. at 714-278-3040 or e-mail [scypers@fullerton.edu](mailto:scypers@fullerton.edu) to schedule a screening appointment.

## Solutions and Strategies - Thursdays 4:30 to 6:00pm

This is a group designed for students who are exploring and possibly wanting to make some changes in their use of alcohol or other substances. The group will meet weekly and provide a safe supportive environment to look at one's patterns and determine ways to make changes to those patterns or make safer choices around the use of alcohol or drugs. Please contact Scott Cypers, Ph.D. at 714-278-3040 or e-mail [scypers@fullerton.edu](mailto:scypers@fullerton.edu) to schedule a screening appointment.

## Women R.U.L.E. - Tuesdays 4:30pm to 6:00pm

The purpose of this group is to establish a supportive network where female students can discuss dating relationship challenges and learn new ways to improve dating relationships through practicing important relationship skills of: Respecting, Understanding, Listening, and Expressing. Please contact Amalia Guerrero, Psy.D. at 714-278-3040 or at [amguerrero@fullerton.edu](mailto:amguerrero@fullerton.edu) to schedule a screening appointment.

**BIOLOGICAL SCIENCE****Wed, Feb 6, 4:00 pm in MH-513**

Speaker: Dr. Youssef Atallah (Biological Science, CSUF)

Host: Dr. Jones

Topic: "Vegetation Structure and Biodiversity in Mediterranean Ecosystem: A Comparative Study between Lebanon and California"

**Wed, Feb 13, 4:00 pm in MH-513**

Speaker: Dr. Ann Dalkey (Palos Verdes Peninsula Land Conservancy)

Host: Dr. Stapp

Topic: "Urban Wildlands is not an Oxymoron: Scientific Research on the Palos Verdes Peninsula"

**Wed, Feb 20, 4:00 pm in MH-513**

Speaker: Paul Salvaterra (Division of Neurosciences, City of Hope)

Host: Dr. Patel

Topic: "Dysfunctional Autophagy: A model for Alzheimer's like Abeta 42-induced Neurodegeneration"

*\* For more information on a particular speaker, please contact the speaker's CSUF host or the seminar coordinator, Dr. Paul Stapp.*

**GEOLOGICAL SCIENCES****Mon, Feb 4, 3:30 pm in MH-327**

Speaker: Candidate

Topic: "Hydrogeochemistry Talk"

**Wed, Feb 6, 10:00 pm in MH-327**

Speaker: Candidate

Topic: "Hydrogeochemistry Talk"

**Mon, Feb 11, 4:30 pm in MH-327**

Speaker: Candidate

Topic: "Hydrogeochemistry Talk"

**Wed, Feb 27, 3:30 pm in MH-327**

Speaker: Candidate

Topic: "Hydrogeochemistry Talk"

**MATHEMATICS COLLOQUIUM****Friday, Feb 15, 1-1:40pm in MH-682**

Speaker: Susan E. Martonosi (Harvey Mudd College, Mathematics Department)

Topic: "My Peace Corps Experience: Not how I changed the world, but how the world changed me."

**CHEMISTRY AND BIOCHEMISTRY****Thurs, Feb 7, 4:00 pm in MH-468**

Speaker: Dr. Janis Louie (Dept. of Chemistry, University of Utah)

Host: Dr. Hyland

Topic: "Harnessing the Chemistry of Carbon Dioxide"

**Thurs, Feb 14, 4:00 pm in MH 468**

Speaker: Dr. Dennis M. Heinekey (Dept. of Chemistry, University of Washington)

Host: Dr. Kantardjieff

Topic: "Hydrogen: Coordination Chemistry, Activation and Storage"

**Thurs, Feb 21, 4:00 pm in MH 468**

Speaker: Mr. Jordan Weir (Graduate Student, Dept. of Chemistry and Biochemistry, CSUF)

Host: Dr. Kantardjieff

Topic: TBA

**Thurs, Feb 28, 4:00 pm in MH 468**

Speaker: Dr. Simone Aloisio (Dept. of Chemistry, CSU Channel Islands)

Host: Dr. Li

Topic: TBA

